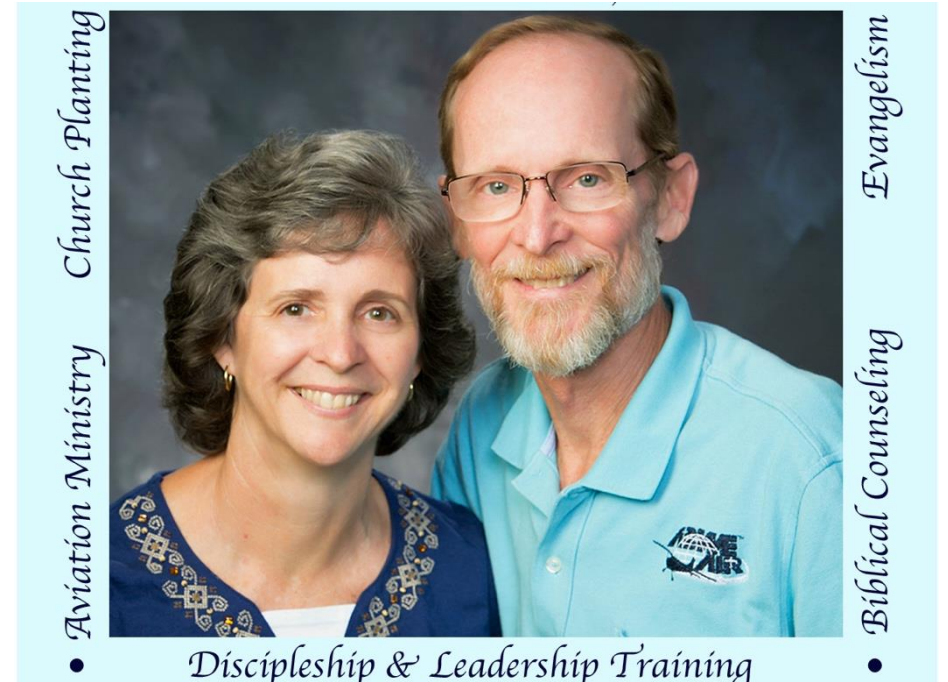




The “life” of an Aviation Church planting team.
Your colaborers,
your representatives,
your partners
your servants, **HIS** bond slaves in Brazil.



45



+ YEARS





Why “Aviation church planting?”

We called our type ministry “aviation church planting” because it did TWO purposes;

1- Supply aviation (planes, maintenance shop, missionary transport, MEDIVAC for our mission hospital, supply flights for the rest of the missionaries, and transport for OUR ministries

2- We ALSO used the airplane to start churches in different towns, and in our career started 7 different churches along with working at some of the Indian tribes.

Hope Baptist Church Itaberaba

1st year on the field, during language study, we helped in the planting of Regular Baptist Church of Pituba



Baptist Church in Lamarão



First Regular Baptist Church in Benjamin Constant



Berean Baptist Church, São Paulo de Olivença



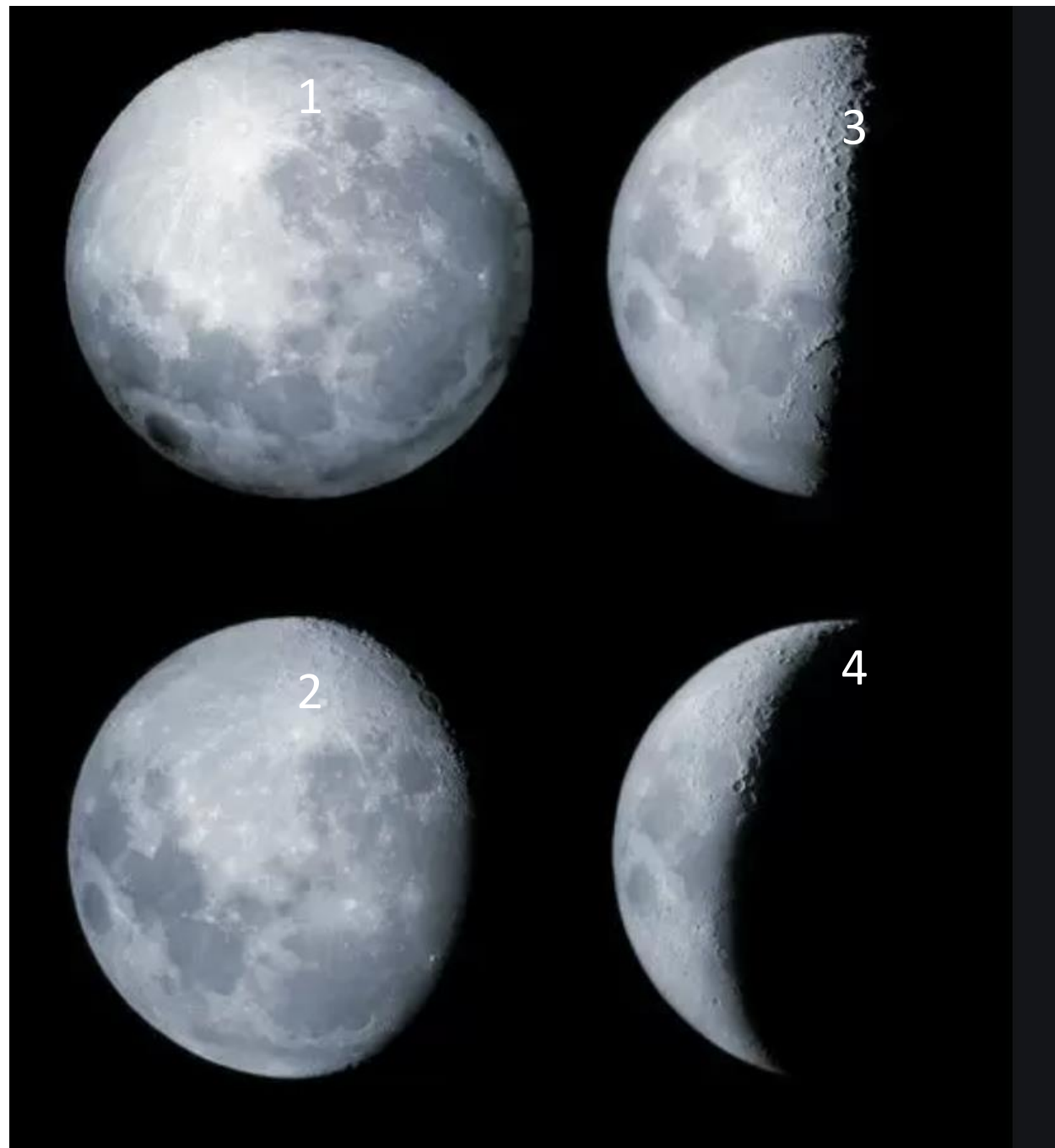
worked with 7 Ticuna Indian churches



Bible Baptist Church in Eusébio, Ceará



We divided out entire time in Brazil into 4 different phases as the work evolved



Phase 1

The FIRST 4
years were in
the state of
BAHIA, Brazil

Bahia 1982



Bahia 1982



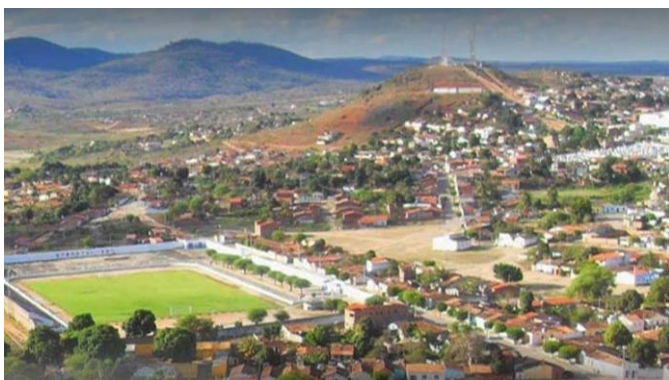
Language school in the FIRST capital of Brazil Salvador. (and at that time helping another missionary couple there.



Pioneer church planting



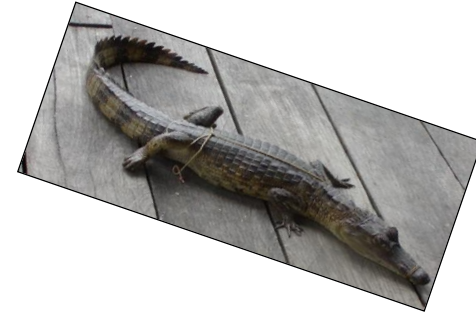
The next 6 years we went interior to a town called Itaberaba Bahia and started a church, and started up the first aviation ministry



Phase 2



Amazonas 1989



Amazonas till 2016



33 glorious years
in paradise.



Our FIRST church plant
was in the town of
Benjamin Constante.

Our SECOND
church plant
was downriver
In a large town
Called
São Paulo de
Oliveça

And with the airplane we
also worked with 14 Indian
villages





But God:



**"For my thoughts are not your thoughts,
neither are your ways my ways,"
declares the LORD.
(Isa. 55)**

BUT after a lifetime on the Amazon river, my wife started to have physical problems that were greatly affecting her and we were advised to consider moving
She grew up in that area
We spent about 3 decades there ourselves
Time to move on, for her sake.

Phase 3



MAJOR move, jungle to "desert" type weather, about 2500 miles.

Fortaleza

2016

IN FORTALEZA
We started working in an established church and helping in a local large seminary.

We mostly taught “Biblical Counseling”

We helped in ministries in Igreja Biblica Batista de Planalto.



SIBIMA
SEMINÁRIO E INSTITUTO BÍBLICO MARANATA



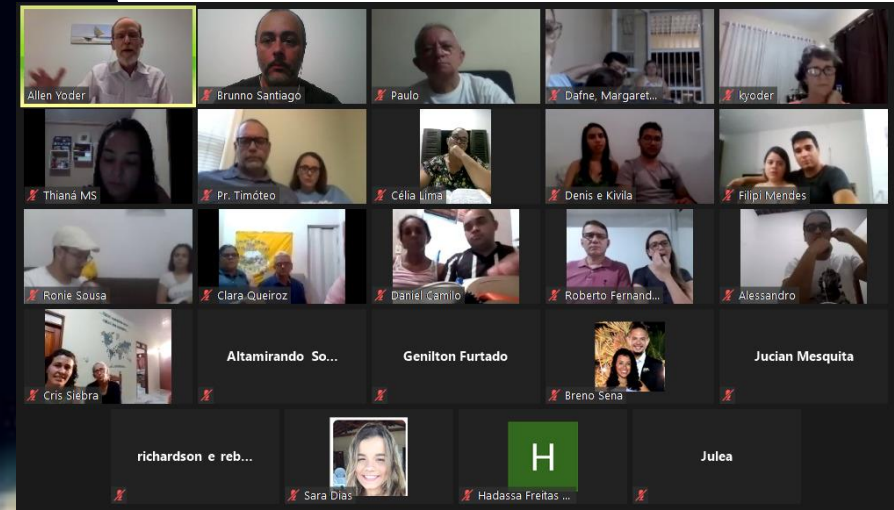
Fortaleza

2016

The State is about the size of Texas so the airplane was used to reach out to the huge interior.

BUT then we had the huge blessing of planting a NEW church in Fortaleza, Igreja Biblica Batista de Eusebio.





COVID hit and both our church and our seminary training went ONLINE.





SIBIMA
SEMINÁRIO E INSTITUTO BÍBLICO MARANATA

*Master's degree
Biblical Counseling*

We then were asked and spent 5 years starting a MASTERS IN BIBLICAL COUNSELING course and program in TWO seminaries

SIBIMA was in Fortaleza (where we already worked)
And LOGOS, a large old seminary way down south Brazil in São Paulo, a seminary that was started by our own missionaries decades before.



AND NOW,
STAGE 4
Phase 4

As God deemed so,
Kim's health started to
get worse again
And the HARD decision
was made to "pack it
up" and come home to
the USA,
get OUT of the tropics.



2022 and
beyond...



~~RETIREMENT~~



Here, in Georgia, Kim's health got much better, and I (on turning 70) "retired" from the mission as an aviation church planter,

However, by God's grace, we could continue on working full time in Brazil via internet schooling, ZOOM classes
And a few visits per year back to the schools.

Continue Master's degree program in both seminaries,
Our partners (co-teachers, all but two with earned doctorates)
(and most of our students are pastors).

“TEACHING THEM TO OBSERVE ALL THINGS, WHATSOEVER I HAVE COMMANDED YOU”





The Plan: 2026 - ???

Not dead, NOT done

Thanks for your prayers

allenyoder@aol.com